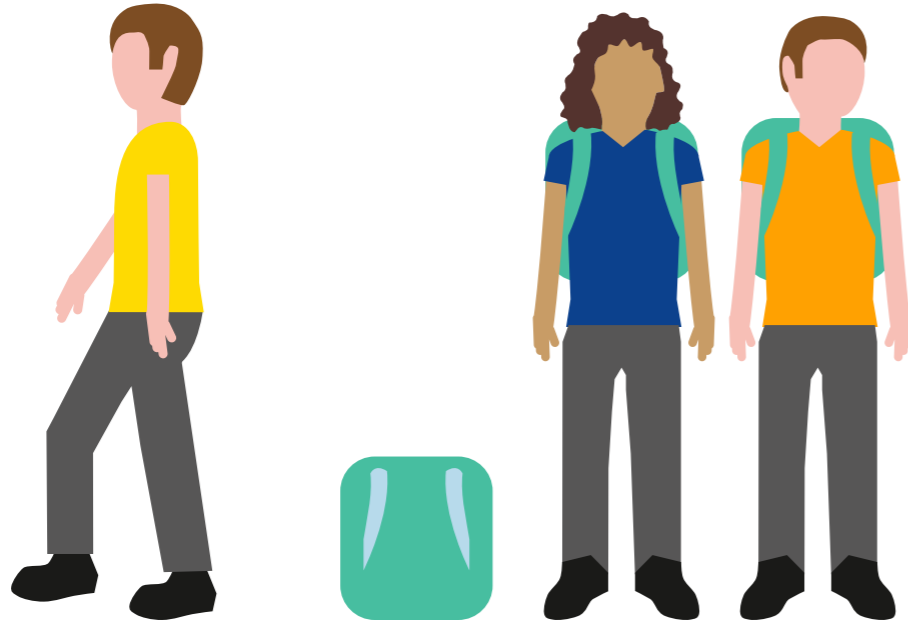


Early leavers from education and training (age 18-24)

Education and Training
Monitor 2020



TARGET: < 10% **2019:** 10.2%
2009: 14.0%



Men



Women



Foreign-born



Native-born

Tertiary educational attainment (age 30-34)

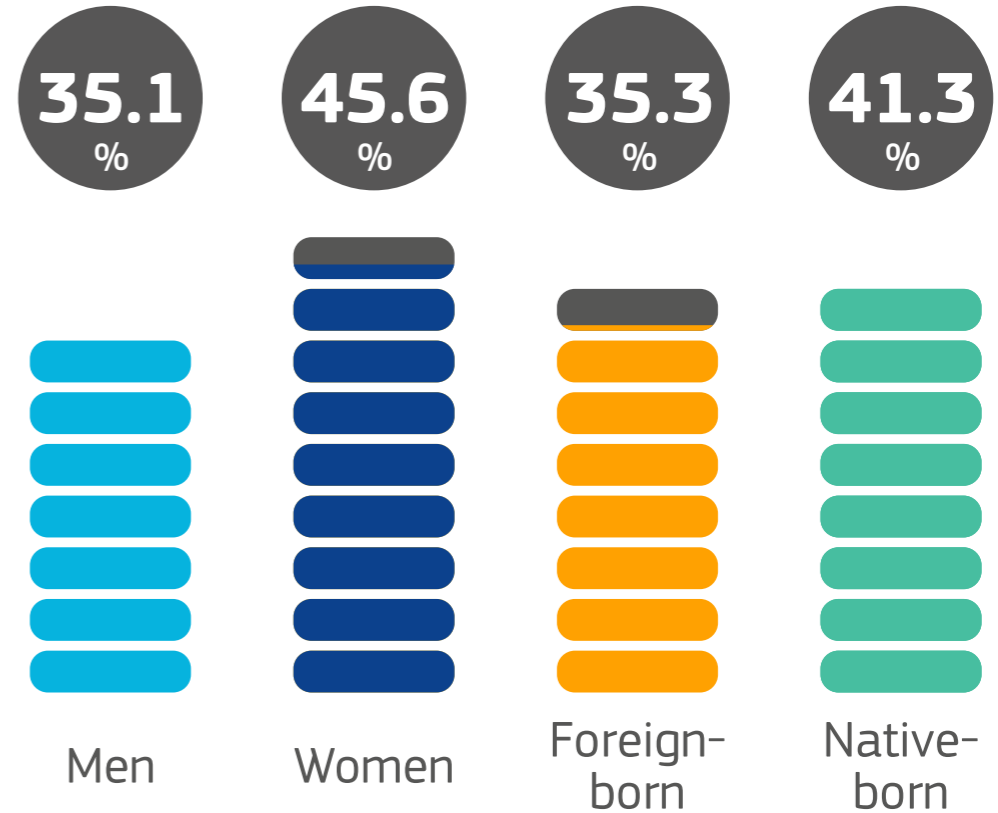
Education and Training
Monitor 2020



TARGET: 40%

2019: 40.3%

2009: 31.1%



Early childhood education (age 4+)

Education and Training
Monitor 2020



Underachievement in basic skills (age 15 years-old)

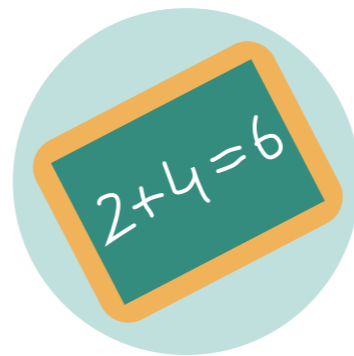
Education and Training
Monitor 2020

TARGET
< 15%



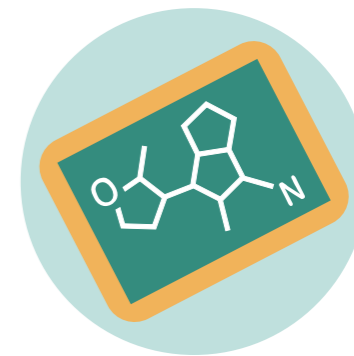
Reading

2018: 22.5%
2015: 20.0%



Maths

2018: 22.9%
2015: 22.2%



Science

2018: 22.3%
2015: 21.1%

Employment rate of recent graduates (age 20-34)

Education and Training
Monitor 2020



TARGET: 82%

2019: 80.9%

2009: 78.0%

Upper secondary vocational education

79.1%

Upper secondary general education

62.8%

Tertiary education

85.0%

Adult participation in learning (age 25-64)

Education and Training
Monitor 2020



TARGET: 15%

2019: 10.8%

2009: 7.9%

By prior level of education

Low qualification **4.3%**
(ISCED 0-2)

Medium qualification **8.8%**
(ISCED 3-4)

High qualification **18.7%**
(ISCED 5-8)

ISCED: International Standard Classification of Education