

Rethinking public procurement through data

Prof. Tünde Tátrai

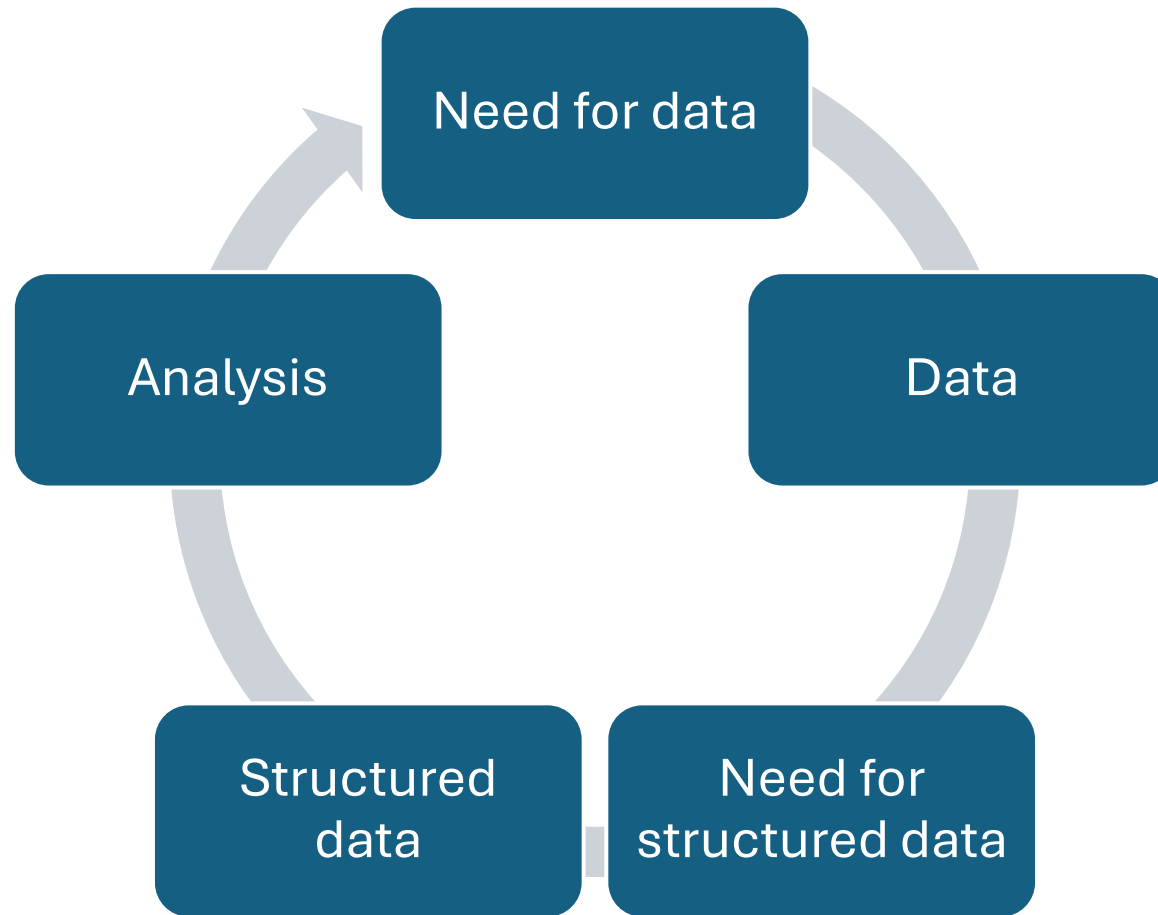
Corvinus University of Budapest, Hungary

Growing curiosity in public procurement

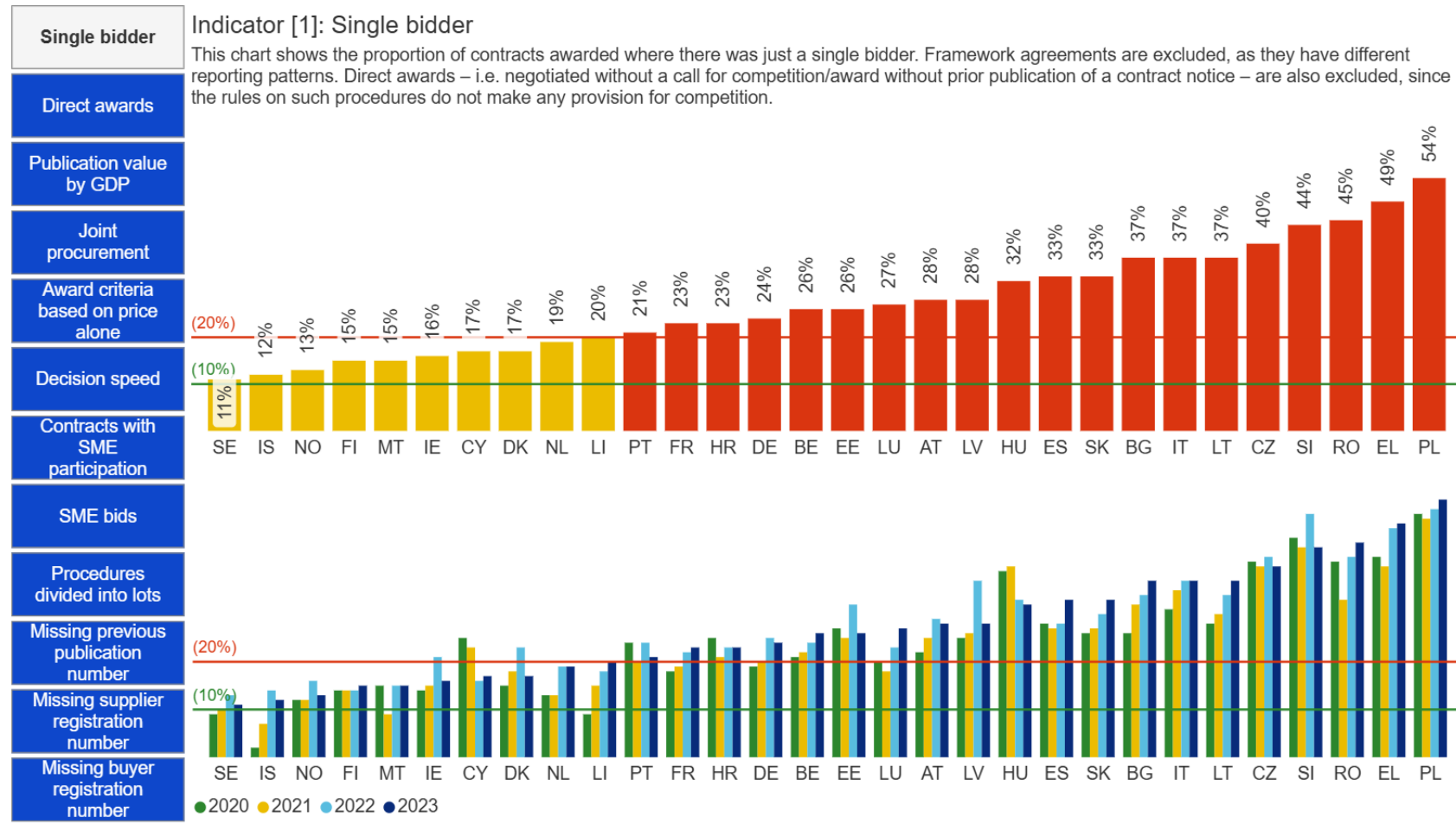
- “Green behavior” of market participants
- Intensity of competition
- Characteristics of abuse or misuse of public procurement
- Actors in the supply chain
- Activity of stakeholders within the procedure
- Estimated value vs. market price



The Never-ending cycle of data discovery for better understanding the market



Indicator system – Scoreboard (2020-2023)

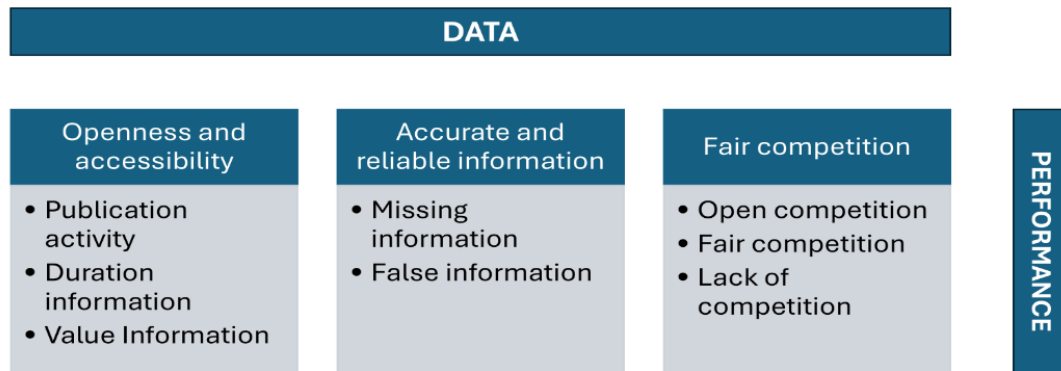


Evaluation of 2014 EU Public Procurement Directives (2025)

- TED Data 2013-2023
- Public Procurement Dataspace: Same data structure above and below the EU threshold

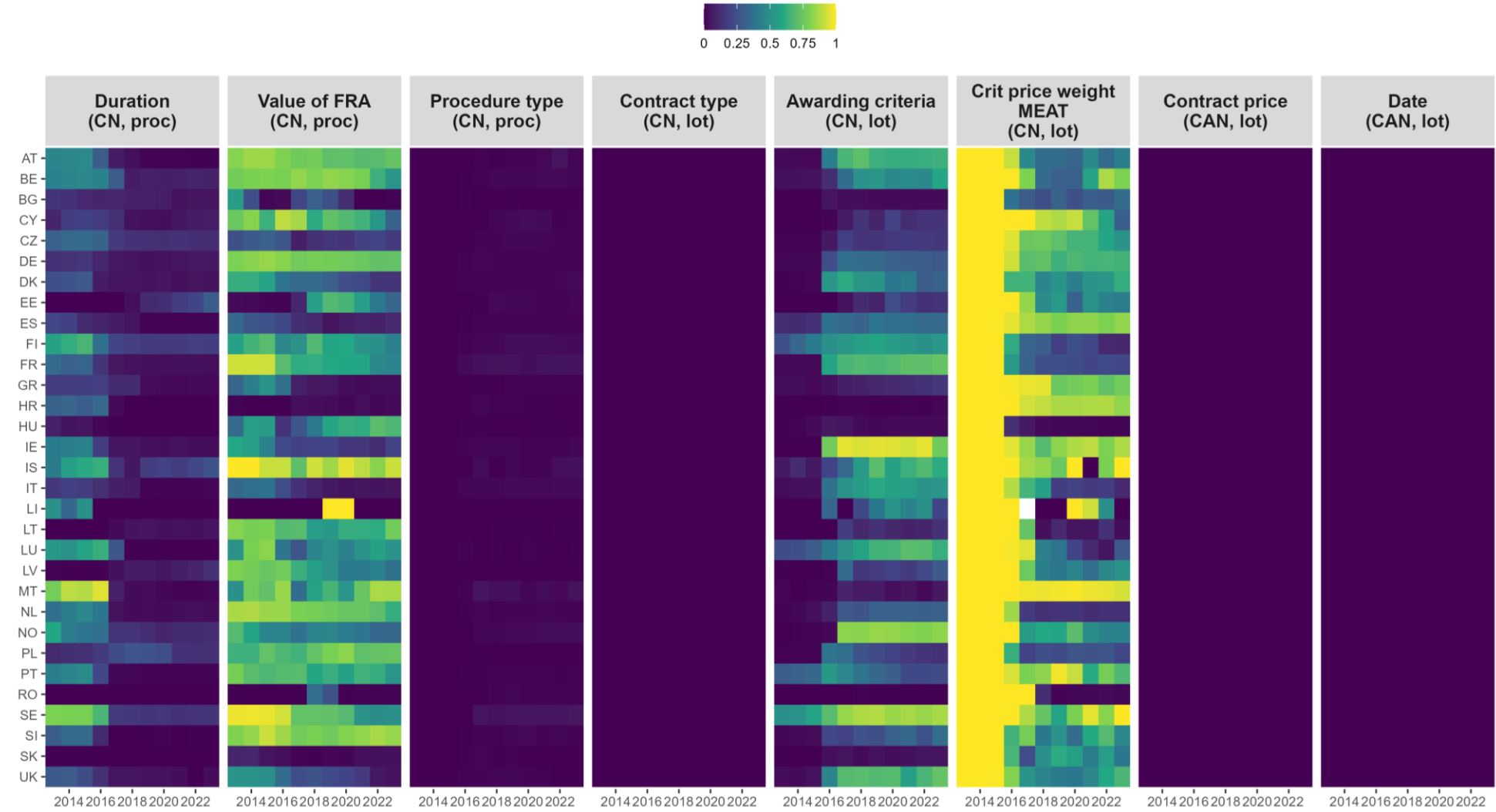


Methodology, framework

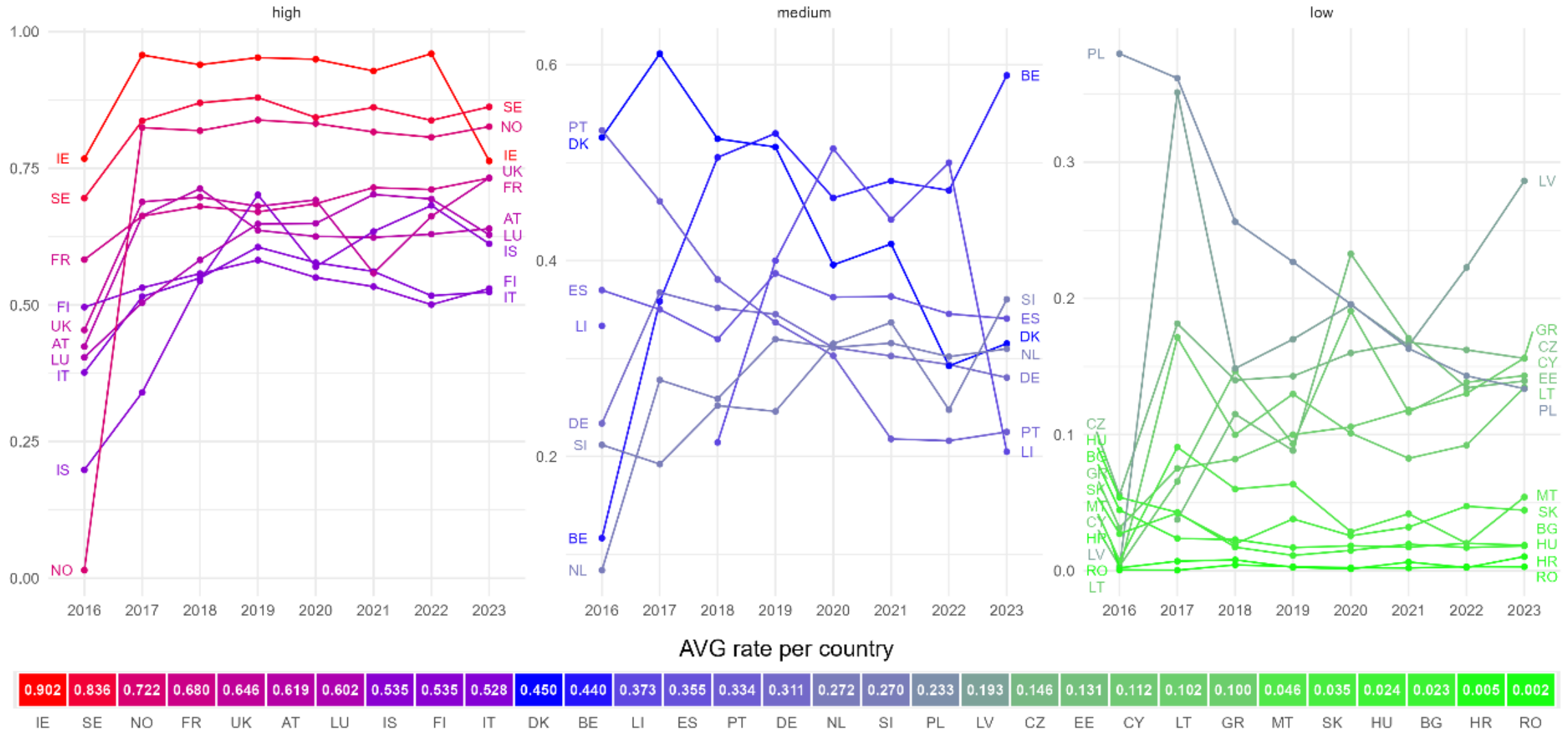


- **Positive Trends:** More procedures, increased publication, improved data connection, more languages allowed.
- **Negative Trends:** More missing awarding criteria, higher rate of single-bid contracts, increased use of framework agreements with single suppliers, more small-value contracts with questionable validity.
- **Neutral/Undefined:** Some indicators (contract price, procedure type) show little change.
- **Data Quality Issues:** Missing or inaccurate data, especially on award criteria and contract values, remain problematic.

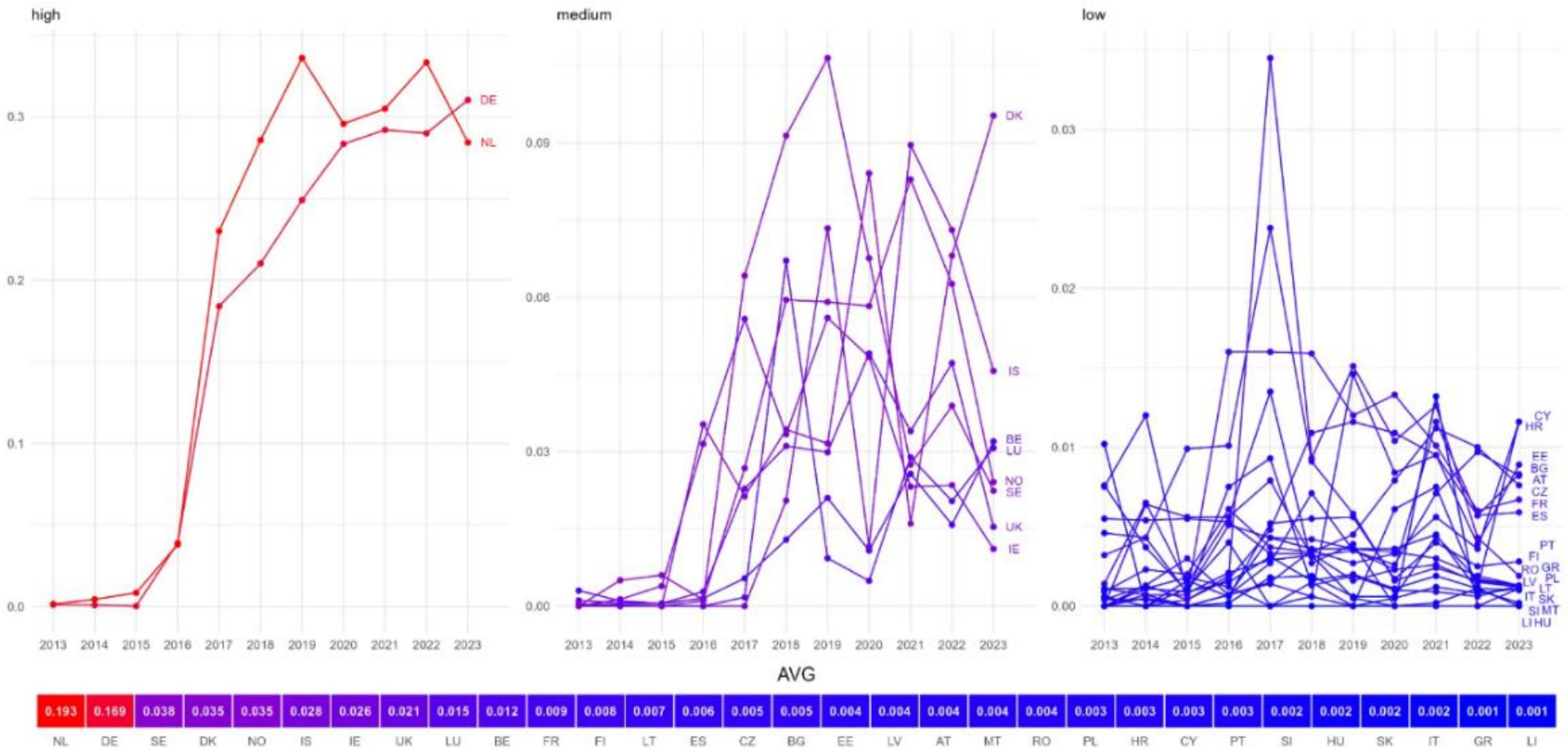
Missing information (0=not missing)



Missing awarding criteria – high – medium – low countries



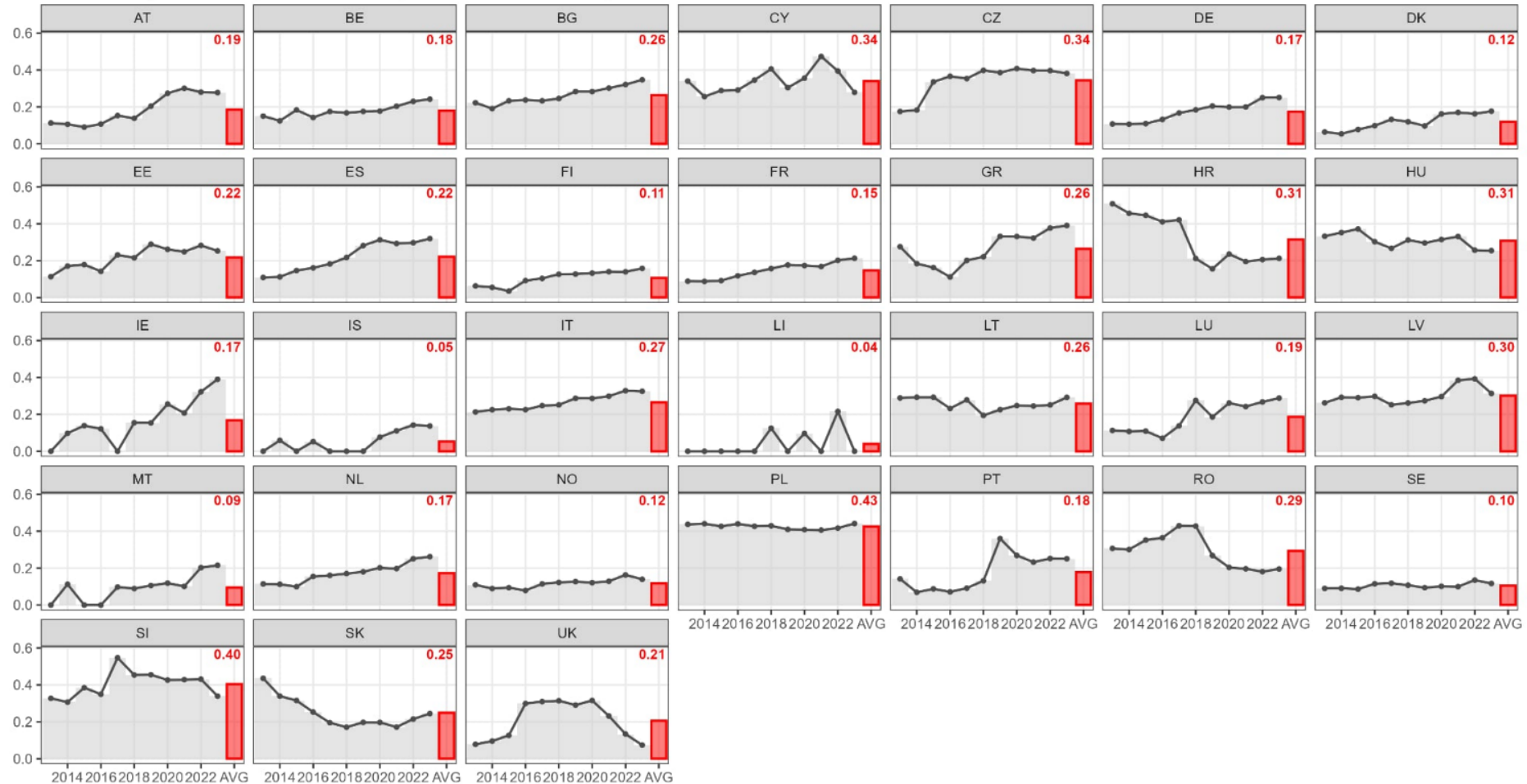
Contract price below 10 EUR



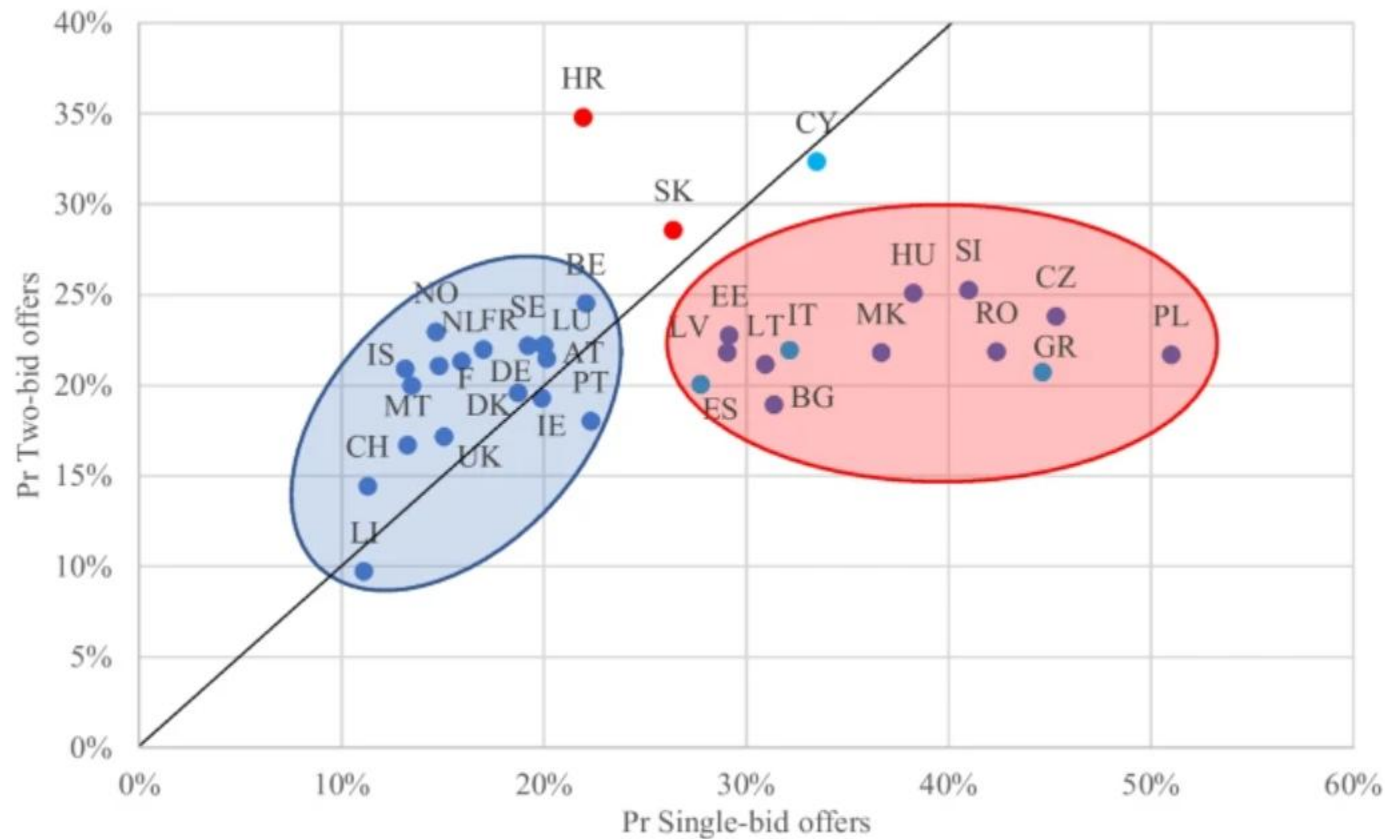
Single bid and direct award

Single bid & direct award ratio

number of single bid LOTS plus number of single bid direct award LOTS per number of LOTS

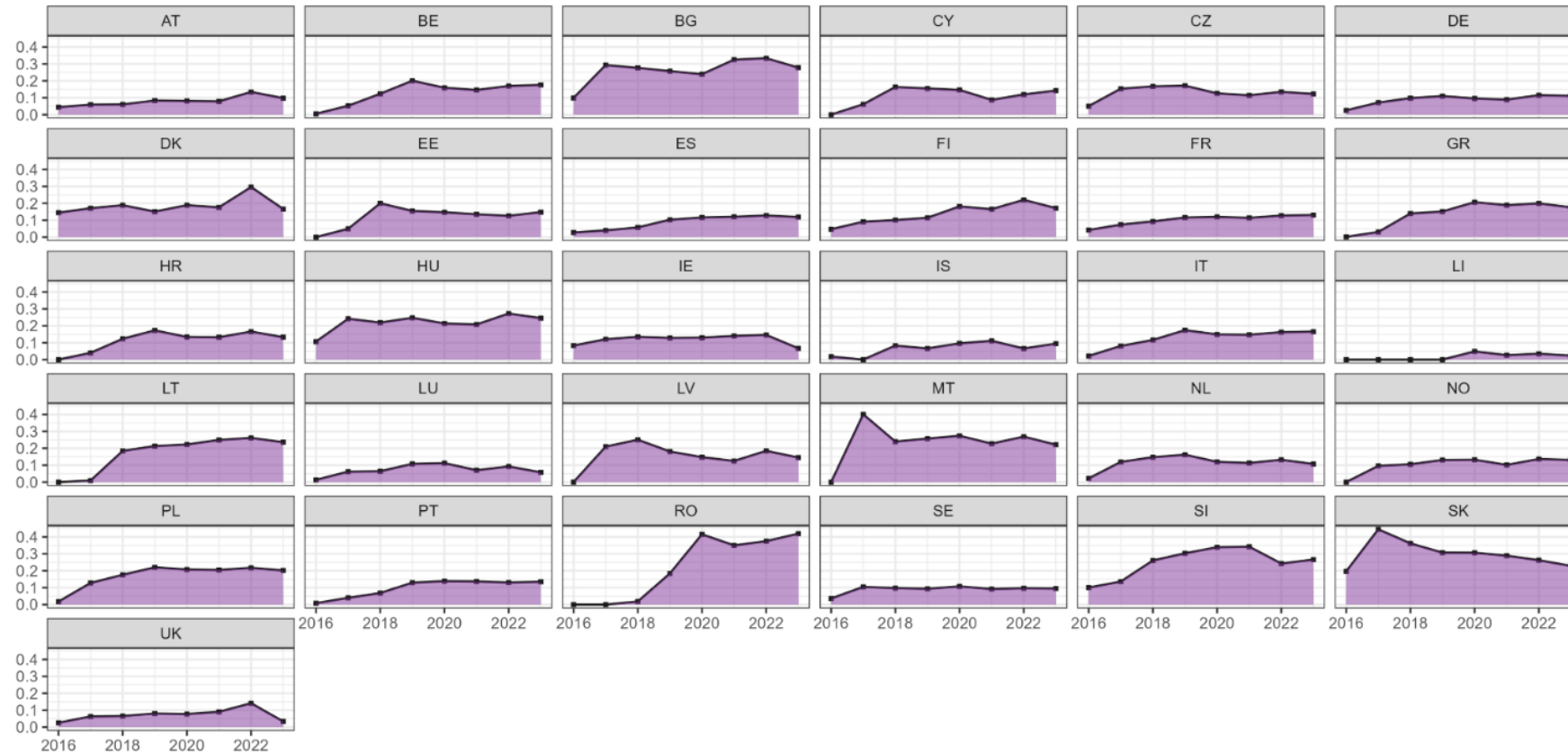


Intensifying competition



Tátrai, T., Vörösmarty, G., & Juhász, P. (2024). Intensifying competition in public procurement. *Public Organization Review*, 24(1), 237-257.

Non-awarded LOTs



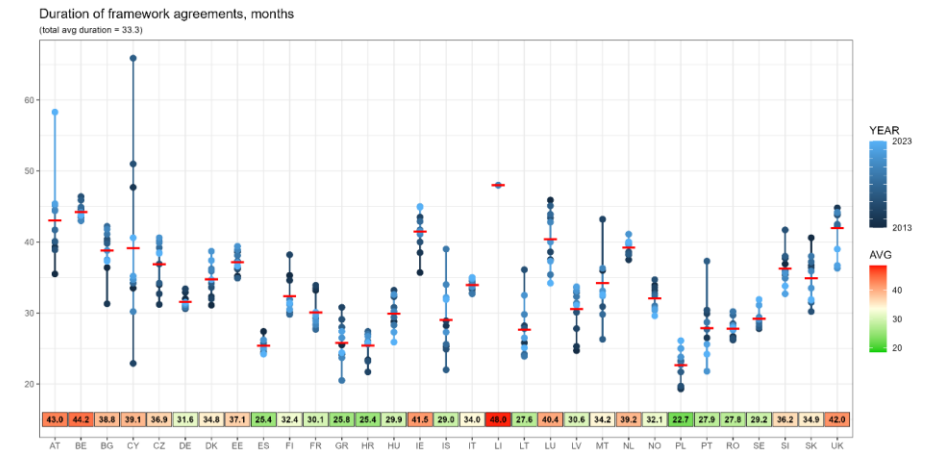
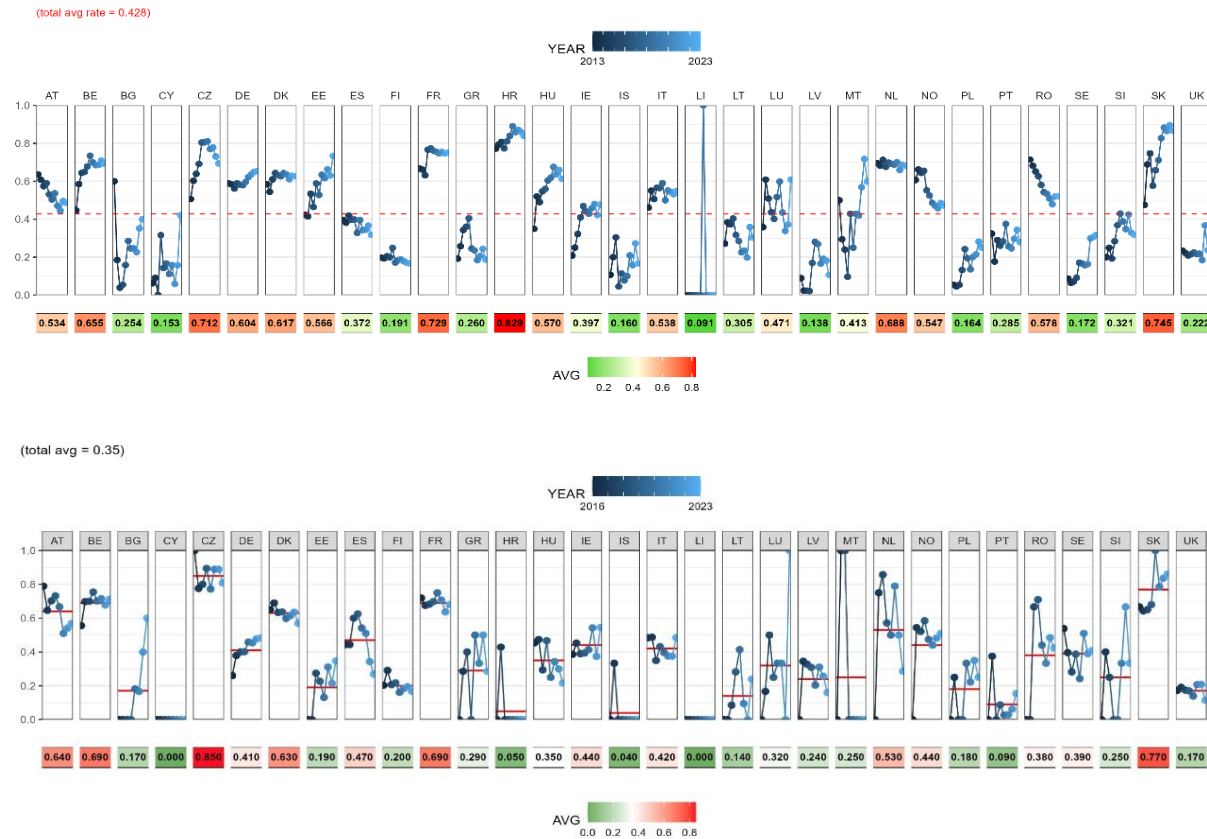
TOTAL rate

0.323	0.268	0.231	0.226	0.222	0.182	0.159	0.150	0.141	0.129	0.126	0.116	0.107	0.105	0.104	0.098	0.097	0.094	0.093	0.089	0.089	0.082	0.082	0.079	0.077	0.074	0.068	0.066	0.059	0.053	0.022
RO	SI	BG	SK	MT	HU	LT	DK	PL	GR	LV	CZ	FI	IT	HR	IE	EE	BE	PT	NL	NO	ES	SE	DE	CY	IS	FR	AT	LU	UK	LI

Framework agreements with a single supplier

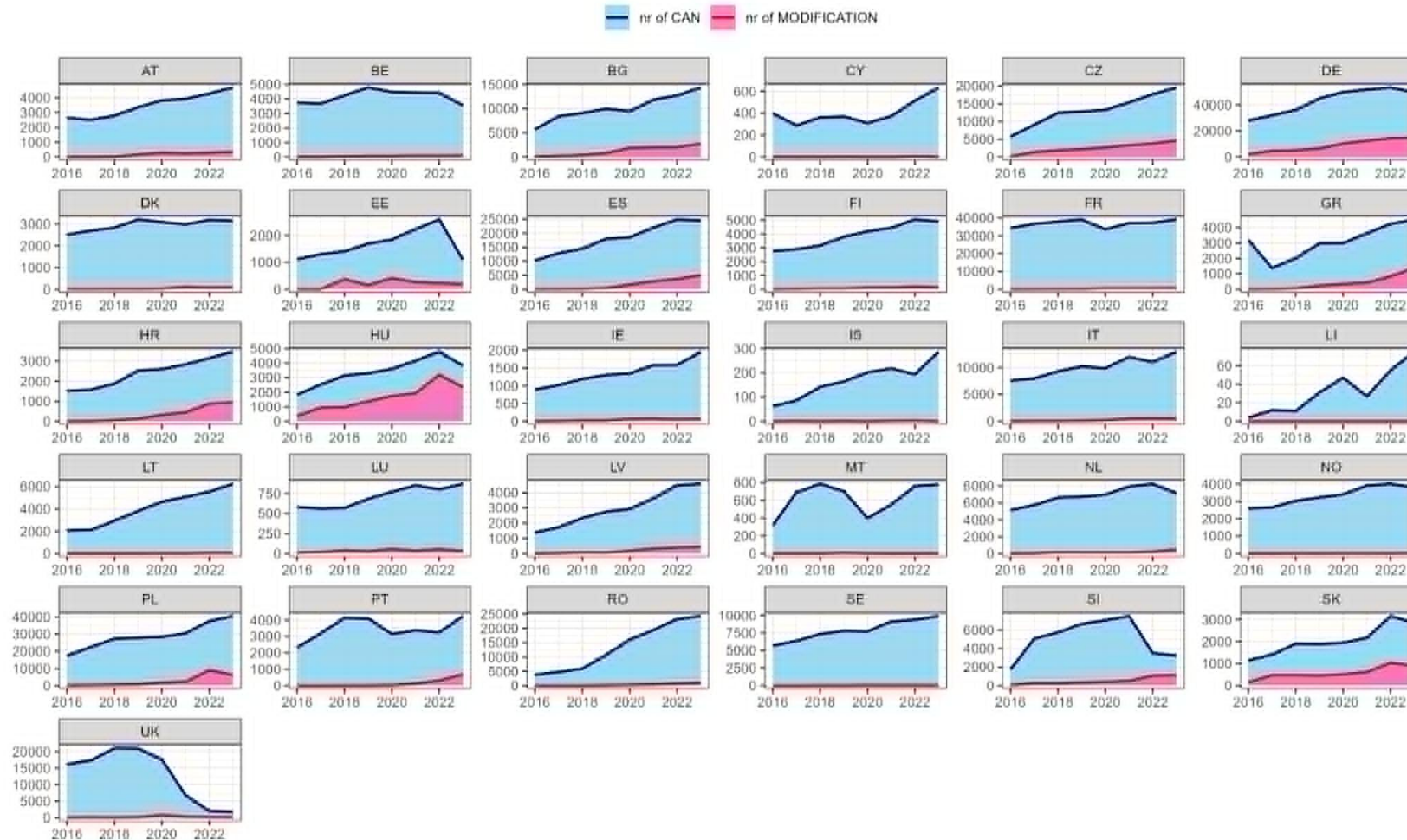
Framework agreements with a single supplier by Central Purchasing Bodies

Duration of framework agreements



Contract modification

Contract modification activity



Data for to

- eSenders
- Re-users
- Contracting authorities
- Economic operators
- Subcontractors
- Capacity organisations
- Central Purchasing Bodies
- Public Procurement Authorities
- Regulators
- Policy makers
- Courts
- Journalists
- Watchdogs
- Analysts
- Consultancy firms

- Analyse
- Decide
- Modify
- Develop
- Collect
- Save
- Retrieve
- Share
- Access
- Process
- Interpret
- Upload
- Aggregate
- Filter
- Visualise
- Clean

- Transform
- Protect
- Backup
- Encrypt

```
▼<addresstypes table.id="address-type" original.entries.date="2014-12-01" current.entries.date="2022-02-59-20220331">
  ▼<record deprecated="false" id="ADR001" date.creation="2015-01-16" adm.status="current">
    <authority-code>OFFICE_NO</authority-code>
    ▼<label>
      <lg.version lg="deu">Büro</lg.version>
      <lg.version lg="eng">Office</lg.version>
      <lg.version lg="fra">Bureau</lg.version>
      <lg.version lg="lav">Biņojas</lg.version>
    </label>
    <op-mapped-code source="WHOISWHO">OFFICE</op-mapped-code>
    <use.context>IMMC</use.context>
    <use.context>WHOISWHO</use.context>
    <start.use>2009-12-01</start.use>
  </record>
  ▼<record deprecated="false" id="ADR002" date.creation="2015-01-16" adm.status="current">
    <authority-code>ADR_OFFICE</authority-code>
    ▼<label>
      <lg.version lg="bul">Работен адрес</lg.version>
      <lg.version lg="ces">Pracovní adresa</lg.version>
      <lg.version lg="dan">Arbejdsadresse</lg.version>
      <lg.version lg="deu">Büroanschrift</lg.version>
      <lg.version lg="ell">Διεύθυνση επικοινωνίας</lg.version>
      <lg.version lg="eng">Office address</lg.version>
      <lg.version lg="est">Töökoha aadress</lg.version>
      <lg.version lg="fin">Työosoite</lg.version>
      <lg.version lg="fra">Adresse professionnelle</lg.version>
      <lg.version lg="gle">Seoladh oifige</lg.version>
      <lg.version lg="hrv">Poslovna adresa</lg.version>
      <lg.version lg="hun">Munkahelyi cím</lg.version>
      <lg.version lg="ita">Indirizzo professionale</lg.version>
      <lg.version lg="lav">Biņojas adrese</lg.version>
      <lg.version lg="lit">Darbo adresas</lg.version>
      <lg.version lg="mlt">Indirizz tax-xoghol</lg.version>
    </label>
  </record>
</addresstypes>
```

“... because data needs a lot of care.”

Source: the Data, Data Song from the Lights OnData

Uploaded 14.11.2025. <https://www.youtube.com/watch?v=pVgceg2wYAQ>

Thank you for your attention!

tunde.tatrai@uni-corvinus.hu