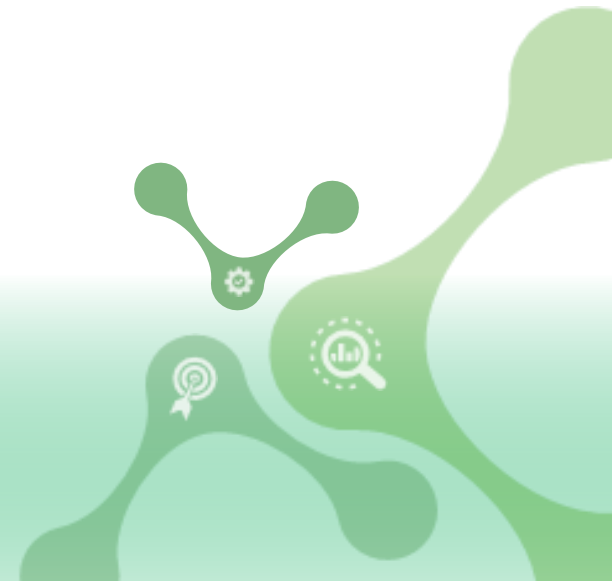


eProcurement Ontology

Enabling data quality by defining the data concepts used in end-to-end procurement

Natalie Muric

Publications Office of the European Union



What is the eProcurement ontology (ePO)

Human readable concepts

Machine Readable concepts

```
:hasItemCountryOfOrigin rdfs:domain :Tender ;  
  rdfs:range skos:Concept .
```

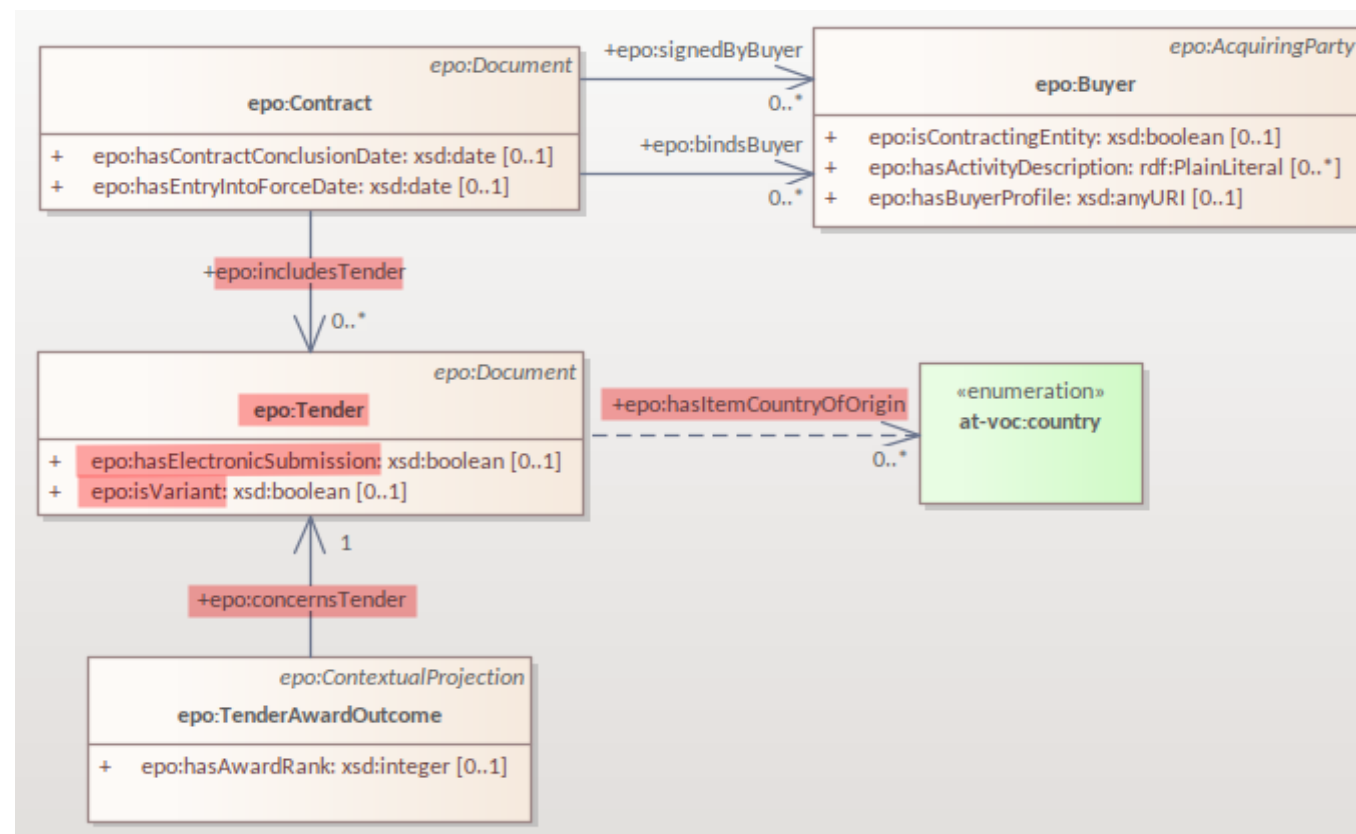
```
:includesTender rdfs:domain :Contract ;  
  rdfs:range :Tender .
```

```
:concernsTender a owl:FunctionalProperty ;  
  rdfs:domain :TenderAwardOutcome ;  
  rdfs:range :Tender .
```

```
:hasElectronicSubmission rdfs:domain :Tender ;  
  rdfs:range xsd:boolean .
```

```
:isVariant rdfs:domain :Tender ;  
  rdfs:range xsd:boolean .
```

```
:Tender a owl:Class ;  
  rdfs:isDefinedBy :core ;  
  rdfs:subClassOf :Document ;  
  skos:definition "Information submitted by the Economic Operator to specify its Offer regarding a specific Lot, in response to the call for Tender. (WG approval 03/05/2022)"@en ;  
  skos:prefLabel "Tender"@en .
```



The public procurement life cycle and the ePO



The ePO enables:

- ✓ Correctness of input data
- ✓ Provision of quality data
- ✓ Efficient reuse
- ✓ Enhanced transparency
- ✓ Viability of analysis

How do we ensure the correctness and quality of the ePO

- Weekly meetings with procurement stakeholders (please join) to:
 - Create the human readable view
 - Define the data concepts and their relations
- Automation and Feedback mechanisms
 - Automatic transformation from human readable to machine readable
 - Publish release candidates to allow review and feedback
 - Availability on [github](#) to encourage the raising of issues and discussions
- Reuse of other vocabularies
 - Core vocabularies
 - Authority tables

Uses of the eProcurement Ontology

- Enabling linked open data
 - Public Procurement Data Space
- Creating common semantics and models
 - eForms
 - ESPD Request and Response
 - CEN TC 440 deliverables
- AI training

Thank you for taking the time for being here

<https://github.com/OP-TED/ePO>

<https://docs.ted.europa.eu/epo-home/index.html>

OP-EPROCUREMENT-ONTOLOGY@publications.europa.eu

Natalie.muric@publications.europa.eu



© European Union 2024

Unless otherwise noted the reuse of this presentation is authorised under the [CC BY 4.0](https://creativecommons.org/licenses/by/4.0/) license. For any use or reproduction of elements that are not owned by the EU, permission may need to be sought directly from the respective right holders.

